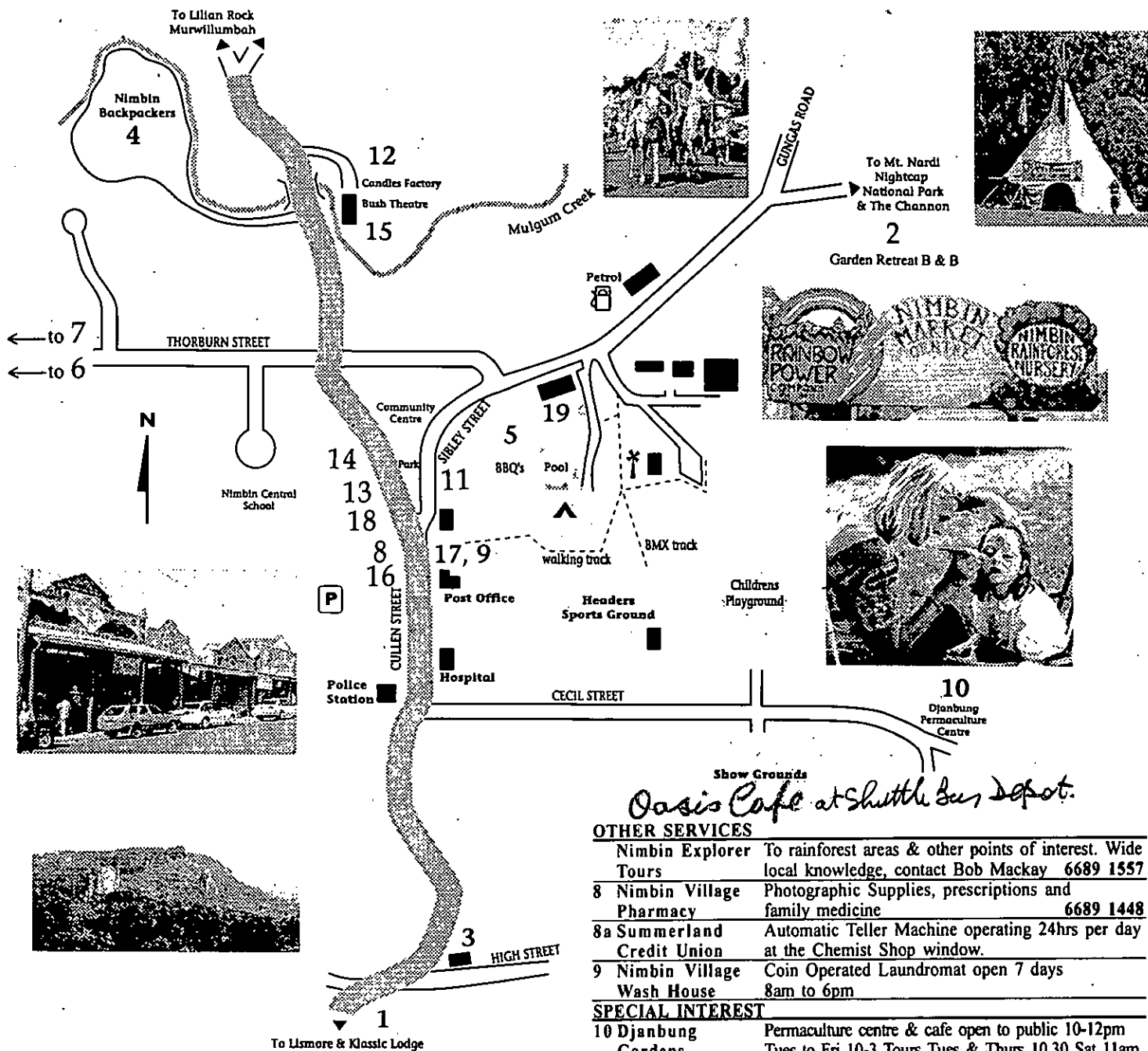


NIMBIN VILLAGE MAP



ACCOMMODATION

1	Klassic Lodge	Country style self contained holiday units -full facilities Phone & Fax	6689 9350
2	Garden Retreat B&B.	Quiet, friendly, comfy, colourful accommodation. Beautiful gardens. Borders Nat. park Close to Nimbin	6689 1145
3	Grey Gum Lodge	Village Guesthouse, ensuite and pool, Mediterranean cuisine. Bookings essential. 2 High Street Nimbin	6689 1713
4	Nimbin Backpackers	Quiet edge of village, variety of accommodation plus creek side camping sites	6689 1333
5	Nimbin Caravan Park	Van sites and camping facilities next to village, bowling club, swimming pool	6689 1402
6	Rainbow Retreat Backpackers	Funky budget accomm. & camping on the creek. Nightly chi tent, cafe & video movies	6689 1262
7	Nimbin Rox Hostel	Hill top views, native wildlife + swimming holes, dorm, twin, tipi, camping, affordable	6689 0022

OTHER SERVICES

Nimbin Explorer Tours	To rainforest areas & other points of interest. Wide local knowledge, contact Bob Mackay	6689 1557
8 Nimbin Village Pharmacy	Photographic Supplies, prescriptions and family medicine	6689 1448
8a Summerland Credit Union	Automatic Teller Machine operating 24hrs per day at the Chemist Shop window.	
9 Nimbin Village Wash House	Coin Operated Laundromat open 7 days 8am to 6pm	

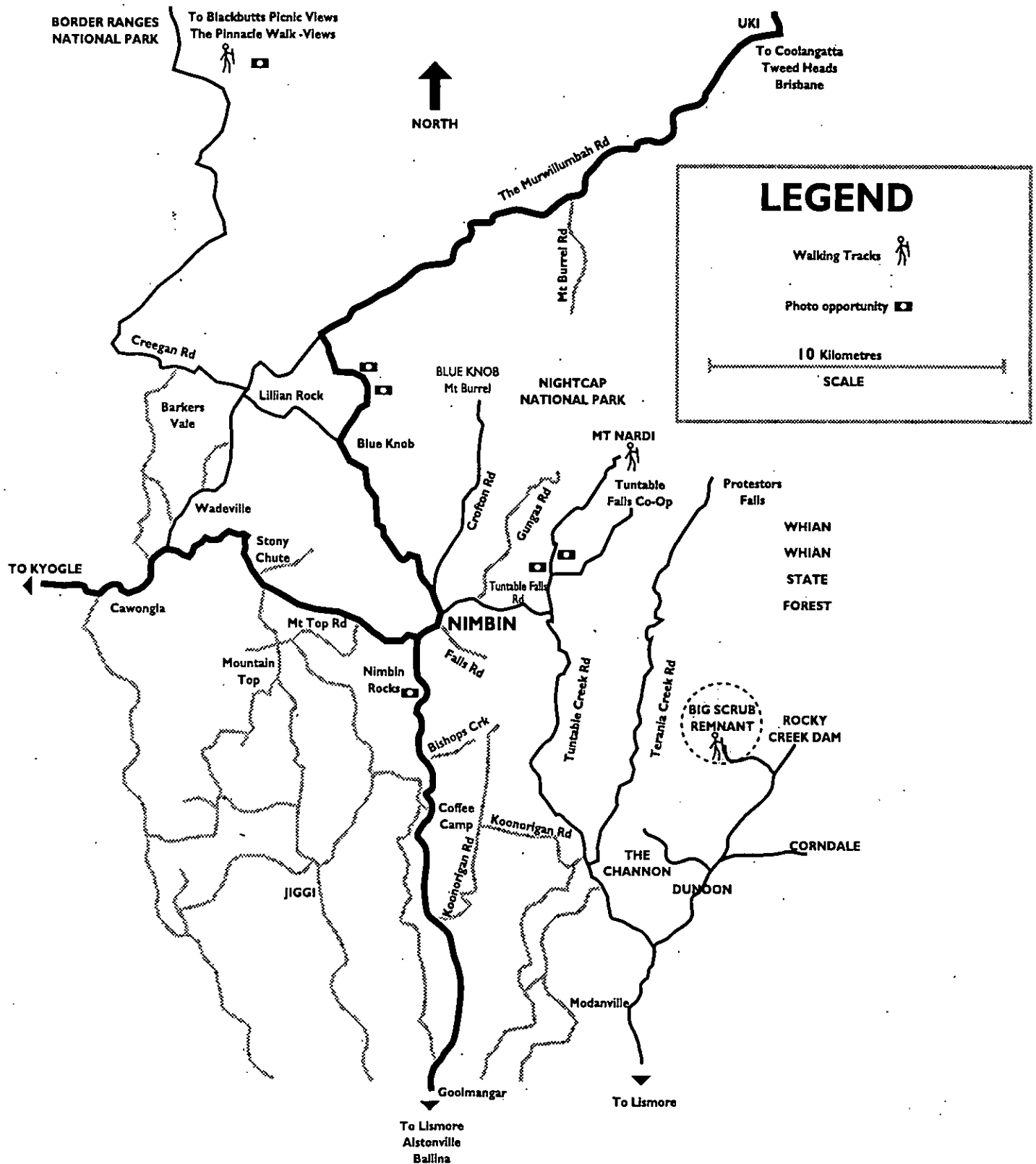
SPECIAL INTEREST

10 Djanbung Gardens	Permaculture centre & cafe open to public 10-12pm Tues to Fri 10-3 Tours Tues & Thurs 10.30 Sat 11am	6689 1755
11 Nimbin Craft Gallery	Quality local art and crafts - open every day 10am to 5pm	6689 1375
12 Nimbin Candles Factory	Handmade candles Mon-Fri 9-5	6689 1010
13 Happy High Herbs	Legal Alternative Herbs for well being, energy and relaxation. 7 days.	6689 1365
13a Daisy	The Clothing Specialist - must see	6689 0146
14 Nimbin Tourist Connexion	Tourist information, internet access, bus tarin and accommodation bookings.	6689 1764
14 Nimbin Byron Shuttle Bus	Daily Service between Nimbin and Byron Bay	6680 9189
16 Nimbin Apothecary	Herbal and homeopathic dispensary. Oils, crystals and cosmetics 9.30 to 4.30 Mon to Fri. 10 to 1 Sat	6689 1529

FOOD & ENTERTAINMENT

18 Nimbin Emporium	"the supermarket" Open 7 days till late	6689 1205
15 Bush Theatre	Unique Cafe & Cinema in the old butter factory Open Fri & Sat 7.30pm sun 6.30pm	6685 5074
17 Choices Cafe	Food for thought on shady veranda or take away. Hours 8am-5pm daily. 45 Cullen Street, Nimbin	6689 1698
19 Bowling Club	Visitors welcome, open 7 days, air conditioned Coaches by appointment	6689 1250

▼▼▼ NIMBIN & SURROUNDS ▼▼▼



**Project of the Nimbin Chamber of Commerce
for community information and fundraising**



DJANBUNG GARDENS • SELF-GUIDED TOUR MAP

10. North Temperate Orchard & Geese

9. Chicken Systems

8. Taro Patch Gardens

7. Woodlot, Bushfoods & Wildlife Corridor

6. Reserve garden area & animal tractor

5. Djanbung Hill Garden

4. Bamboo

11. South Temperate Orchard & Ducks

12. Djanbung Waters - main dam

13. Celtic Circle - cold temperate plants

14. Wetland Treatment & Flowforms for main building septic system

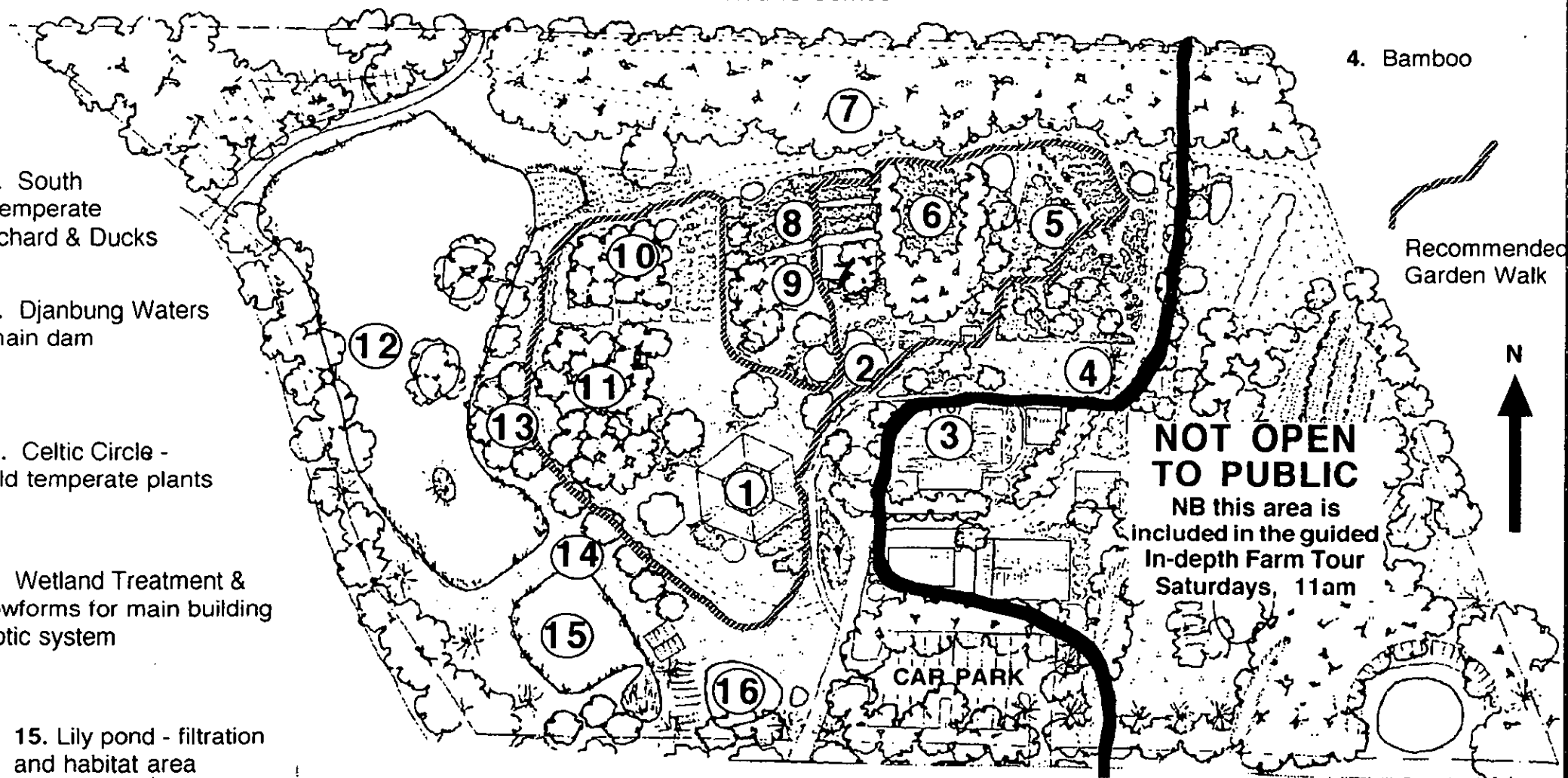
15. Lily pond - filtration and habitat area

16. Lotus pond

1. Education & Resource Centre

2. Greywater Wetland Treatment System

3. Railway Carriages Residential Area



1. Education & Resource Centre

This hexagonal building is the hub of Djanbung Gardens housing the Resource Centre & nursery retail, administration office, canteen/cafe, seminar room and research library. Surrounded by edible landscapes designed to support the passive solar features of the building, based on a cottage garden theme the gardens integrate culinary, medicinal and fragrant herbs, companion and edible flowers with vegetables and spices.

2. Greywater Wetland Treatment System

This Rivercare 2000 Award-winning system treats the greywater from the railway carriages residential facilities together with excess urine from the 'Closet Deposit' composting toilet. Treated water flows into the holding pond & floating water plants are harvested and fed to the chickens recycling the nutrients into eggs and garden fertiliser.

3. Railway Carriages Residential Area

The 3 weatherboard camp wagons (ex-Qld Rail) are placed in a U-formation creating a sun-trap for the winter sun. The garden courtyard is protected from frost thus a collection of tropical spices and fruit trees are included in the landscape. The verandahs provide a diversity of microclimates for out-door living.

4. Bamboo

Here are 2 of the 10 varieties of clumping bamboos planted on Djanbung Gardens. The larger leafed variety is Buddha's Belly, an attractive bamboo for furniture and crafts. The thin, slender variety is Weaver's Bamboo traditionally split into fine slats for basketry and popular for flutes and pan-pipes.

5. Djanbung Hill Garden

This artificial mound was created from soil left over from road construction on Jarlanbah and creates slopes for terracing and contour gardens plus a diversity of microclimates. Planted with herbs (medicinal, fragrant & culinary) plus vegies & edible flowers. The permanent paths are made with Sawdust-sand-cement.

6. Reserve garden area & animal tractor

Suntrap of native flowering shrubs, cherry guava & fejoa surrounds this area. Planned as a future pig system when trees mature with forage forest at back (mulberry & guava) and veg production. Meantime it provides a reserve garden area for staples like potato & sweet potato, and occasionally for raising young poultry.

7. Woodlot, Bushfoods & Wildlife Corridor

The woodlot & wildlife corridor was planted by Nimbin Landcare April 1992. The eucalyptus trees are being gradually harvested for construction and replaced with local rainforest bushfoods, craft and medicinal plants. Wildlife include wallabies, bandicoots, echidna, goannas, lizards and birds.

8. Taro Patch Gardens

The heavy clay soil here had severe waterlogging problems, solved by creating small drains for water-loving vegetables (comfrey, taro, arrowroot, kang kong etc) and using the soil to build up free-draining garden beds - all companionately planted and sheet mulched. The garden sink is for cleaning root crops, returning soil & water to the gardens.

9. Chicken Systems

Two separate flocks of chickens are kept with similar layout of chook house, strawyard (to process mulch for garden) and a forage forest where weeds and kitchen scraps are recycled as chicken feed. The trees & hedge bamboos in the forage forest create a windbreak & suntrap for the vegetable garden. Litter from the chook houses and duck house are composted in the compost bays for the gardens.

10. North Temperate Orchard & Geese

Warm temperate deciduous orchard with quince, Japanese plum, Nashi pear, tropical apple & peach. Elderberry hedge on western side protects trees from hot dry westerly winds, living fence on north boundary with Lomandra & NZ flax. This area managed by geese in rotation with ducks.

11. South Temperate Orchard & Ducks

Warm temperate orchard has citrus, persimon, pecan, olive, fig & pomegranates - was established with short-term interplanting of wattles (*Acacia spp*) for nitrogen cycle and wind protection. This area is managed by ducks (Kaki Campbell, Welsh harlequin & Pekin, plus a goose who thinks she's a duck!) to keep down weeds and fertilise the trees.

12. Djanbung Waters - main dam

This large dam, created in a natural gully, holds approx 2 megalitres of water and is our 'drought insurance' and natural 'swimming pool'. Designed to maximise it's natural aquaculture potential it has been stocked with freshwater prawns, silver perch & Australian bass. Note the eel grass 'meadows' along edge for prawn habitat.

13. Celtic Circle - cold temperate plants

Ceremonial circle planted with sacred Celtic trees: oak, ash, birch, beech, elder, alder etc and companion meadow herbs.

14. Wetland Treatment & Flowforms

This system treats the waste water from the toilet and kitchen in the Resource Centre building. The reedbed removes nutrients and destroys harmful pathogens including ecoli. The flow forms aerate and oxygenise the treated wastewater.

15. Lily Pond

This shallow pond filters water flowing into the dam from the road and provides a great habitat for water birds, turtles and yabbies.

16. Lotus pond

This purpose-designed pond is planted with sacred lotus which has edible leaves, flowers, seeds and roots. The carpark provides a valuable water catchment area to fill the pond, flowing first through a small filter pond planted with papyrus.

Carpark: landscaped with shade trees and small trees, shrubs and ground covers for birds, bees & butterflies. It also provides a valuable windbreak.

TOP AREA (not open to public except with our guided In-depth Farm Tour on Saturdays) includes:

Bushfoods swale planted with local rainforest bushfoods trees by Peter Hardwick

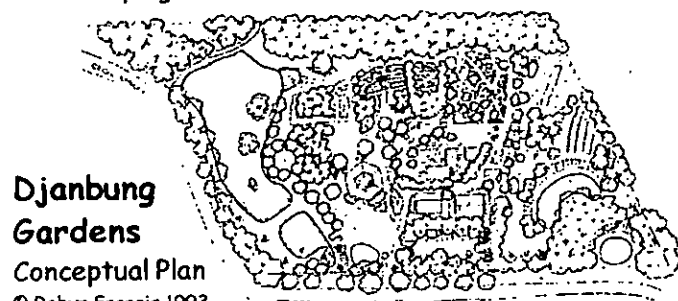
Subtropical Food Forest - a frost free microclimate has been created with dams and canopy trees for sub-tropic & tropical fruits. Canopy tree legumes include Tipuanu, Icecream bean, Albizzia, Peanut tree, Schyzolobium and Wattles. Under these are planted fruit trees including custard apple, cherimoya, avocado, longan, cinnamon, mango, white sapote, rose apple, jakfruit, candlenut, starfruit, grumichama, brazil cherry, jaboticaba etc and rainforest bushfoods: davidsons plum, macadamia, black apple, riberry, small leafed tamarind, native guava etc. Understory & ground covers include tumeric, galangal, cardamom, sweet potato, perennial buckwheat, black sugar cane & coffee.

Small ridge dam on highest point of property collects road run-off from Jarlanbah. This dam gravity feeds irrigation water for the gardens.

Under the leadership of Robyn Francis, award-winning international permaculture exponent, ERDA Institute delivers affordable quality training in a purpose designed permaculture education centre next to Jarlanbah, one of the finest eco-village developments in Australia.

More than a theoretic exercise, you will participate in living examples of ecological design and permaculture in practice, in the centre & surrounding neighbourhood.

Robyn Francis has taught over 80 PDC's (Permaculture Design Courses) internationally since 1985 and is renowned for her work and training in the areas of sustainable community development, ecovillage design, work with indigenous peoples and in developing countries.



The unique benefit of doing a course at Djanbung Gardens is that you can immerse yourself in a total permaculture experience. Permaculture here is an integral part of everyday life with a 5 acre living 'classroom' of working permaculture systems.

Quality training in an experiential environment is our hallmark, with a team of experienced tutors lead by Robyn Francis.

Enjoy international cuisine of delicious meals created with seasonal produce fresh from the gardens. Special dietary needs are thoughtfully catered for incl. vegan, satvik (vedic) and gluten-free.

Next door to Djanbung Gardens is Jarlanbah Permaculture Hamlet, providing a unique opportunity to experience a working Eco-village and see first-hand a wide range of domestic permaculture homes and gardens, alternative building techniques, different composting toilets and waste water management systems and insights into community life.

At Djanbung Gardens you can enjoy the tranquility of a rural environment with the convenience of close proximity and easy access to village facilities including public phones, post office, ATM, laundromat, shops and other village services.

ERDA TEACHING TEAM

ROBYN FRANCIS (Dip Perm Des)

Principal tutor for Permaculture Education, Robyn Francis is well known for her extensive work in permaculture since 1984: as a teacher, designer, presenter, writer, editor of the Permaculture International Journal ('87-92) & founding director of Permaculture International Ltd. She has taught and consulted in USA, Germany, New Zealand, India, Bali & around Australia including work with Aboriginal communities.

Robyn Francis' extensive design work has involved suburban edible landscapes, self-sufficiency & commercial farms, community gardens, public landscapes, rural communities & village development, in climates ranging from cold temperate to arid & humid tropics.

As a teacher she draws on this rich practical experience as well as the years of organic gardening, herb production and organic farming that preceeded her permaculture work. Her experiential approach to learning as an active and empowering experience emphasises the practical applications of permaculture ideals & principles.

Presenter of The Mandala Garden video, author of several books, and the Celtic Eightfold Year Garden Charts, Robyn has received numerous awards for her work over the past 20 years & walks her talk at Djanbung Gardens.

GUEST TUTORS:

Janelle Schafer - Janelle draws on her background in horticulture, practical experience in permaculture and living on the land on an intentional community. Janelle has lectured for TAFE and been a regular guest tutor at Djanbung Gardens PDCs for 5 years

Peter Hardwick - key player in establishing the bushfoods industry & research into Aboriginal ethno-botany. Peter is passionate about native plants and leading authority on subtropical bushfoods

Peter Gould - Sub-tropical Farm Forestry, sustainable tree cropping systems, bush regeneration & forestry issues

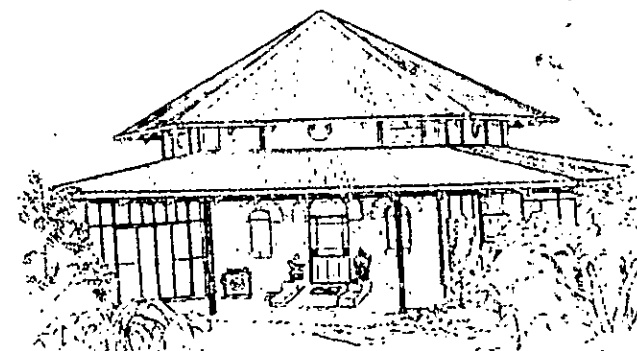
Peter Cuming - award-winning principle of 'Sustainable Futures' at the cutting edge of community facilitation, strategic planning and sustainable settlement design. An inspiring and engaging presenter with powerful insights into personal and community empowerment processes.

Wendy Sarkissian - Australia's leading social planning consultant, Wendy is currently based in Brisbane and a member of Jarlanbah Permaculture Community.

Robert Rosen - key player in the Ethical investments movement in Australia, authority on sustainable community economics and a director of Nimbin EvoVillage P/L

THE ERDA INSTITUTE TRUST PERMACULTURE EDUCATION 2003 COURSE PROGRAMME

practical skills
& knowledge for sustainable design,
community development
& earthwise living



at Australia's leading
permaculture education centre,
Djanbung Gardens

- **Permaculture Design Course**
- **ECOVILLAGE & Sustainable Community Design**
- **Permaculture for Third World & Indigenous Peoples**



ERDA INSTITUTE
Djanbung Gardens
PO BOX 379 NIMBIN NSW 2480
PH 02-6689 1755 FAX 02-66891225
www.earthwise.org.au

PERMACULTURE DESIGN COURSE

2003: JAN13-26

APRIL 6-19

JUN 15-28

AUG 24-SEP 7

NOV 10-23



The Earthwise PDC at Djanbung Gardens covers the international PDC curriculum, addressing all major climatic zones and attracts participants from all over Australia and overseas, creating a diverse and stimulating social atmosphere of like-minded people.

Receive a copy of Permaculture Education's PDC Handbook with over 100 pages of comprehensive notes and resource information

Participate in Dynamic Interactive Learning including field trips practical sessions and access to the permaculture-in-action projects and systems at Djanbung Gardens, Jarlanbah Permaculture Hamlet and the unique village of Nimbin. Successful participants will receive a Permaculture Design Course Certificate of Completion which is the minimum requirement for working in permaculture and for membership of Permaculture International.

TOPICS INCLUDE...

- Patterns and processes in nature and human culture
 - Design for sustainability - permaculture principles & ethics
 - Soil ecology & management, natural nutrients, mulches etc
 - Water management planning, collection, storage and conservation, earthworks and aquaculture
 - Forest ecosystems and design of forests for food, forage, fibre, habitat, conservation, wildlife, tree-crops and farm forestry
 - Sustainable food producing systems for home gardens and small holdings through to broad acre farmlands
 - Integrated free-range and animal forage systems
 - Design to reduce vulnerability to fire, drought & natural disasters
 - Integrated pest & weed control
 - Appropriate energy and resource conserving technologies and design, renewable energy systems and passive solar house design
 - Bioregional & community development strategies, urban renewal, eco-village design, community economics, legal structures, community gardens and city farms
- TUTORS: Robyn Francis, Janelle Shafer, Peter Hardwick, et al.
COST: \$850/\$750 conc. (unemployed, pension, student)

SPECIALIST & ADVANCED TRAINING

Permaculture for Third World & Indigenous Peoples

Aug 1-8, 2003

This course helps you develop the skills required to work in developing countries and with indigenous communities. Topics include community facilitation & communication, cultural sensitivity, project development, appropriate aid & technology, health & nutrition, food security, sustainable food production in humid & arid tropics, field security and taking care of yourself. Course activities involve presentations, discussions, individual and group project work and hands-on practical.

TUTOR: Robyn Francis & guests

COST: \$450/\$375 conc.

Ecovillage & Sustainable Community Design Course

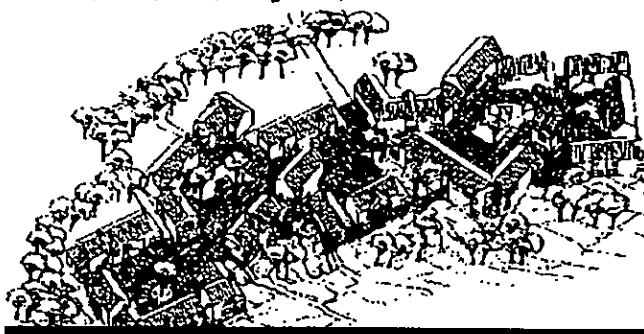
July 7-18, 2003

This intensive course will arm you with the information and planning tools to develop ecologically and socially sustainable human settlements including urban and rural communities, ecovillages and cohousing with Australia's leading planners and designers. Includes environmental and social perspectives, land tenure & infrastructure options, working with government authorities, community governance, decision making & conflict resolution.

Course activities include presentations, discussion, group project work and visits to local eco-communities.

TUTORS: Robyn Francis & Peter Cuming. Guest tutors include Wendy Sarkissian, Robert Rosen

COST: \$790-\$650 (sliding scale)



IMPORTANT - all courses

Course fees include tuition, course notes, excursions, lunches & some evening meals.

A \$100 deposit will secure your place.

Course fee does not include accommodation.

Enquire about Erda volunteer concessions or LETS payment.

ACCOMMODATION: not included in course fee. Options include: Djanbung Gardens Farmstay (bunks \$75/wk & private room \$100/wk) or in the village: backpackers, hotel etc

TRANSPORT: LISMORE (30km from Nimbin) is serviced by NSW railway CountryLink • Coach (Syd-Bris) • Air (Syd). Daily Shuttlebus service: Byron Bay -Nimbin Ph 02-6687 2007

www.earthwise.org.au

Registration Form:

Name: _____

Address: _____

Postcode: _____

Ph: _____

Email: _____

Please register me for the following:

Course Name: _____ Date: _____ Cost: _____
/ / \$

For catering:

☐ Vegan ☐ Vegetarian (eggs/dairy) ☐ Omnivore

I understand that

- a deposit ensures my place in the course
- deposit is non-refundable unless course is cancelled or full
- the balance is due at the commencement of the course

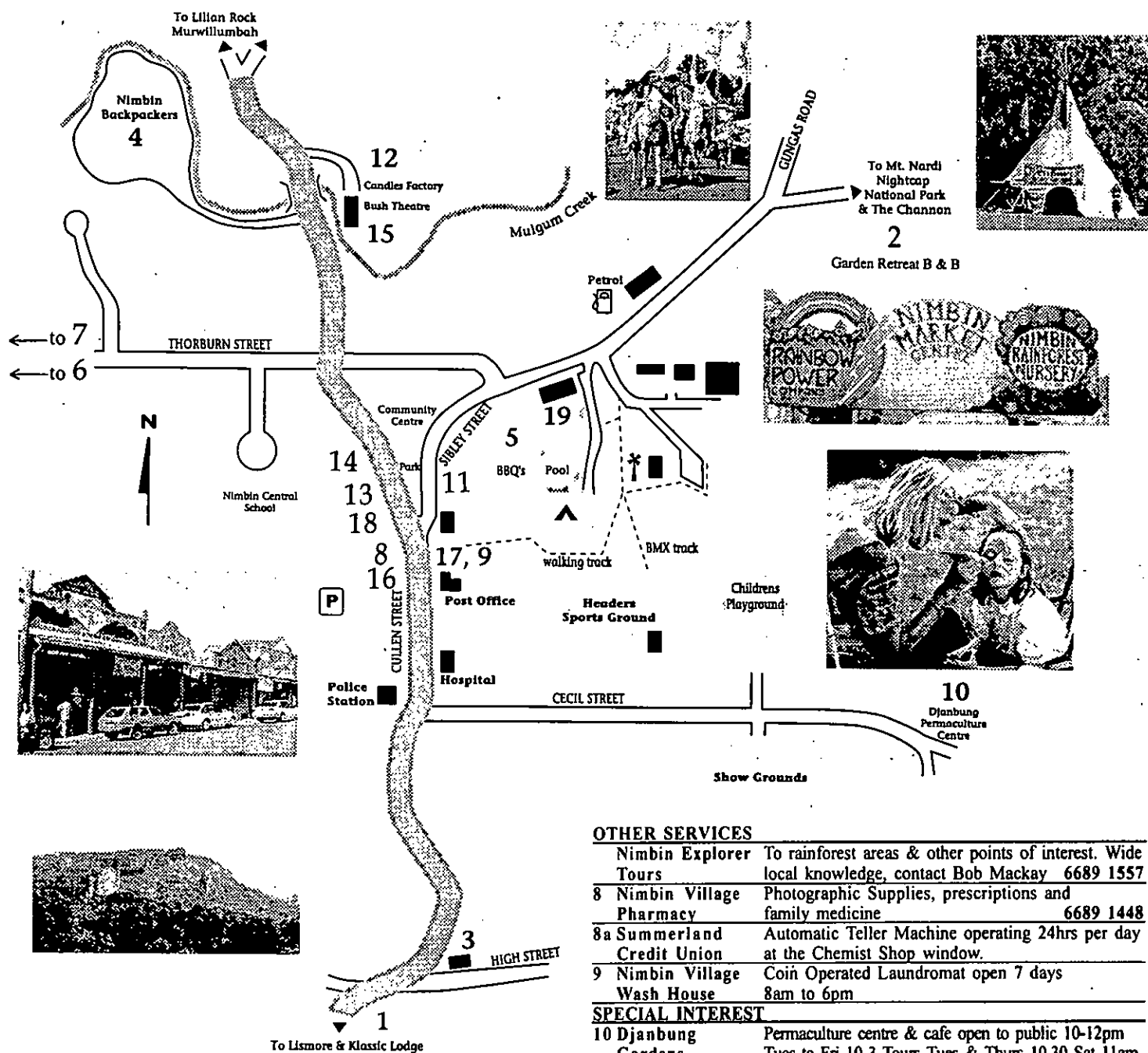
Enclosed is cheque/ money order/ other for \$ _____
in payment of full fee / deposit

Signed: _____ Date: _____

Send with Payment to Erda Institute Trust
PO Box 379 Nimbin NSW 2480

FURTHER INFORMATION PH 02-66891755

NIMBIN VILLAGE MAP



ACCOMMODATION

1	Klassic Lodge	Country style self contained holiday units -full facilities Phone & Fax	6689 9350
2	Garden Retreat B&B.	Quiet, friendly, comfy, colourful accommodation. Beautiful gardens. Borders Nat. park Close to Nimbin	6689 1145
3	Grey Gum Lodge	Village Guesthouse, ensuite and pool, Mediterranean cuisine. Bookings essential. 2 High Street Nimbin	6689 1713
4	Nimbin Backpackers	Quiet edge of village, variety of accommodation plus creek side camping sites	6689 1333
5	Nimbin Carvan Park	Van sites and camping facilities next to village, bowling club, swimming pool	6689 1402
6	Rainbow Retreat Backpackers	Funky budget accomm. & camping on the creek. Nightly chi tent, cafe & video movies	6689 1262
7	Nimbin Rox Hostel	Hill top views, native wildlife + swimming holes, dorm, twin, tipi, camping, affordable	6689 0022

OTHER SERVICES

Nimbin Explorer Tours	To rainforest areas & other points of interest. Wide local knowledge, contact Bob Mackay	6689 1557
8 Nimbin Village Pharmacy	Photographic Supplies, prescriptions and family medicine	6689 1448
8a Summerland Credit Union	Automatic Teller Machine operating 24hrs per day at the Chemist Shop window.	
9 Nimbin Village Wash House	Coin Operated Laundromat open 7 days 8am to 6pm	

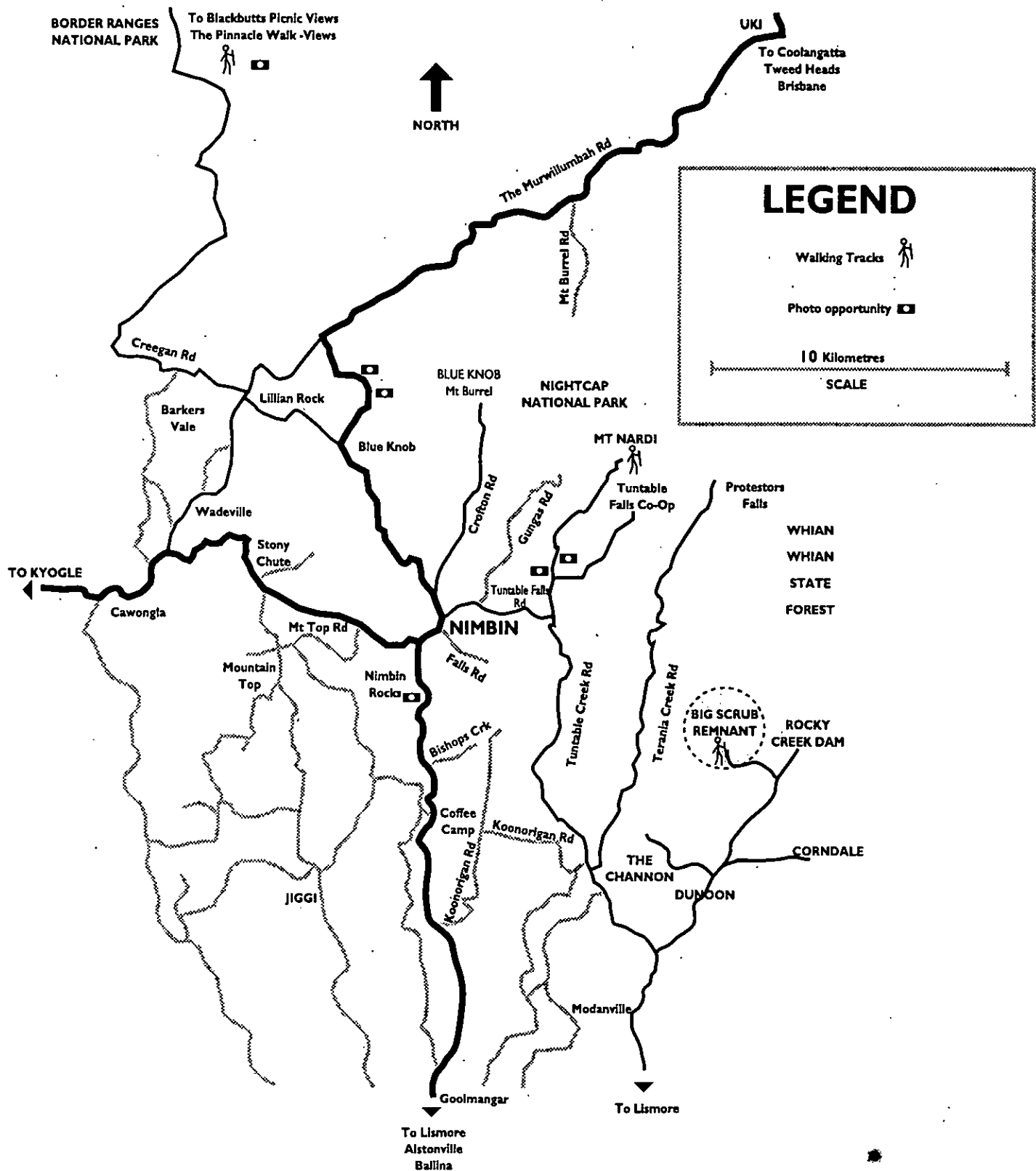
SPECIAL INTEREST

10 Djanbung Gardens	Permaculture centre & cafe open to public 10-12pm Tues to Fri 10-3 Tours Tues & Thurs 10.30 Sat 11am	6689 1755
11 Nimbin Craft Gallery	Quality local art and crafts - open every day 10am to 5pm	6689 1375
12 Nimbin Candles Factory	Handmade candles Mon-Fri 9-5	6689 1010
13 Happy High Herbs	Legal Alternative Herbs for well being, energy and relaxation. 7 days.	6689 1365
13a Daisy	The Clothing Specialist - must see	6689 0146
14 Nimbin Tourist Connexion	Tourist information, internet access, bus tarin and accommodation bookings.	6689 1764
14 Nimbin Byron Shuttle Bus	Daily Service between Nimbin and Byron Bay	6680 9189
16 Nimbin Apothecary	Herbal and homeopathic dispensary. Oils, crystals and cosmetics 9.30 to 4.30 Mon to Fri. 10 to 1 Sat	6689 1529

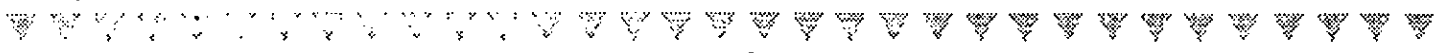
FOOD & ENTERTAINMENT

18 Nimbin Emporium	"the supermarket" Open 7 days till late	6689 1205
15 Bush Theatre	Unique Cafe & Cinema in the old butter factory Open Fri & Sat 7.30pm sun 6.30pm	6685 5074
17 Choices Cafe	Food for thought on shady veranda or take away. Hours 8am-5pm daily. 45 Cullen Street, Nimbin	6689 1698
19 Bowling Club	Visitors welcome, open 7 days, air conditioned Coaches by appointment	6689 1250

▼▼▼ NIMBIN & SURROUNDS ▼▼▼



**Project of the Nimbin Chamber of Commerce
for community information and fundraising**



visiting...

Resource centre & nursery:

Open Tues-Sat 10-4pm

SHOP: books, garden charts, non-hybrid seeds, cottage crafts

NURSERY: herbs & useful plants

CANTEEN: refreshments available

LIBRARY: for research - no lending



guided tours

informative, facinating, educational & inspiring...

Garden tour

every Tues & Thurs 10.30am

In-depth farm tour

Saturdays 11am

• other times by appointment •

~ enquire about our special group rates ~

Jarlanbah Community Tour

2nd Saturday of the month 12.30-4pm

includes lunch & afternoon tea at Djanbung

Gain insights into community life and see an inspiring diversity of permaculture homes and gardens. Next

door to Djanbung Gardens, Jarlanbah has 43 residential lots sharing 33 acres of community land. Visits restricted to ensure residents privacy. Please book in advance for the Jarlanbah Tour.



eco-farmstays

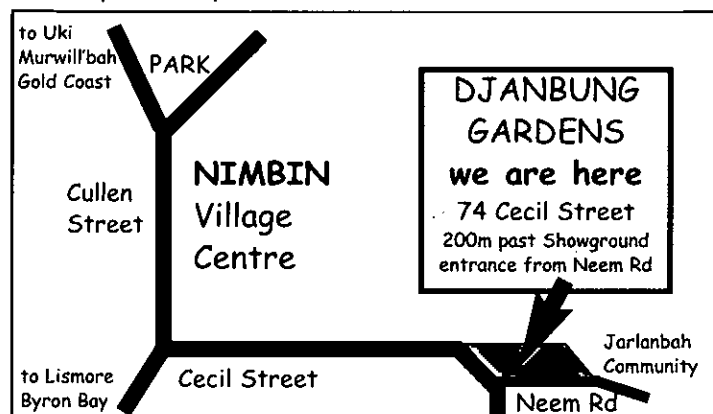
Limited backpacker-style accommodation available for farmstays and Wwoofing.

Bunkhouse and private rooms, shared toilet, shower & kitchen facilities. Enquire about our reasonable rates.

courses & workshops

Workshops on permaculture, organic gardening, herb-lore, traditional crafts & earth wisdom.

Courses & advanced training include Permaculture Design, Eco-village & Sustainable Community development, Bushfoods, Permaculture for Third World & Indigenous Peoples. Enquire for details and dates.



Permaculture Design Course

this 2-week intensive course with Robyn Francis & guest tutors includes the 72 hour international PDC curriculum of the Permaculture Institute.

Permaculture is design science for sustainable human environments based on principles of ecology. Applicable from the backyard to the bioregion, city to wilderness, Permaculture integrates architecture, technology, food production, resource management, landcare, community development, urban and social strategies.

Dynamic & interactive learning in a creative environment with access to the living permaculture systems at Djanbung Gardens & Jarlanbah.

5 courses conducted annually

- ask for a copy of our current yearbook or visit our website for dates & details

Permaculture Education

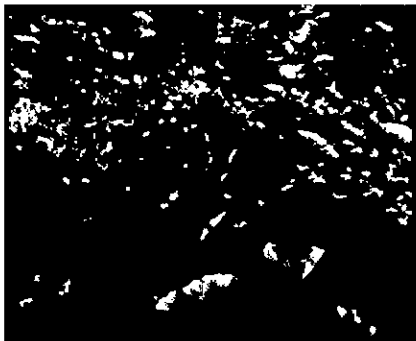
operating since 1989, Permaculture Education delivers quality training in permaculture design and practice with a professional team of experienced tutors lead by Robyn Francis, award-winning international permaculture educator and designer.

ERDA Institute

A not-for-profit educational organisation formed to develop accredited training and education in permaculture design, earthwise resource management and living skills and to make this training available to Aboriginal and economically disadvantaged groups. You can support this work.



POULTRY, ORCHARDS AND FOOD FORESTS permeate the landscape in a diverse range of microclimates, inter-connecting with numerous ponds, dams, creative water systems, aquaculture and wildlife habitat & corridors.



EDIBLE LANDSCAPES and generous gardens introduce you to a cornucopia of traditional and unusual herbs, vegetables, spices, flowers, fruits, bushfoods and useful plants and demonstrate companion planting, mulching, composting and other organic gardening techniques.



celebrating abundance earthwise living with **PERMACULTURE**

GARDEN TOURS
ORGANIC CAFE
ECO-FARMSTAY
HERBAL CRAFTS
BOOKSHOP
NURSERY
WORKSHOPS
COURSES
VENUE

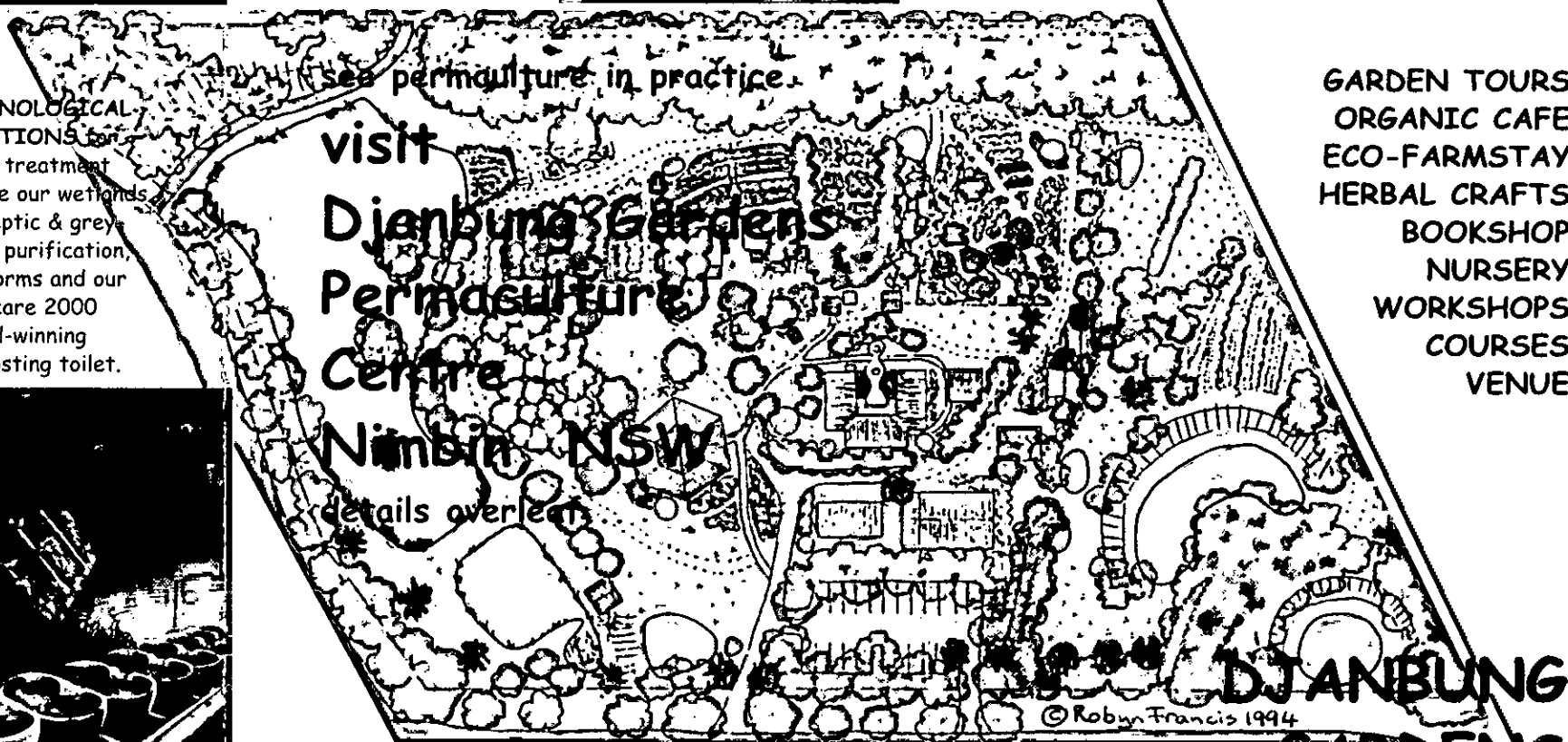
ECO-TECHNOLOGICAL SOLUTIONS for waste treatment include our wetlands for septic & grey water purification, flowforms and our Rivercare 2000 Award-winning composting toilet.



ALTERNATIVE BUILDING TECHNOLOGY is show-cased with the ERDA Institute building designed by Robyn Francis using earth bricks, sawdust-sand-cement panels, natural materials, renders & finishes and passive solar design for the sub-tropics.



GOURMET ORGANIC CUISINE from the Djanbung Canteen - book in for lunch and ask about our special events & banquets - international cuisine & bushfoods. Check out our homemade & grown organic preserves.



DIJANBUNG GARDENS

Permaculture Centre
74 Cecil Street
Nimbin NSW 2480
Ph 02-66891755
permed@nor.com.au
www.earthwise.org.au

PUBLIC TALK BY DAVID HOLMGREN

PERMACULTURE AND THE THIRD WAVE OF ENVIRONMENTAL SOLUTIONS

David Holmgren, co-originator of the permaculture concept in the 1970s, presents an informative and inspirational picture of how this radical Australian design system has been a major source of creative environmental solutions. He uses this understanding of the past to show how we can creatively respond to the current collision of environmental, economic and political issues.

David's newly published book *Permaculture: Principles and Pathways Beyond Sustainability*, which promises to charge up the sustainability debate will be launched on the North Coast prior to the public talk.

David will paint a picture of a "prosperous road down in a world of energy descent" with new and effective design solutions applicable to our lives, livelihoods and landscapes.

For an evening of inspiration from one of Australia's great environmental thinkers:

Djanbung Gardens

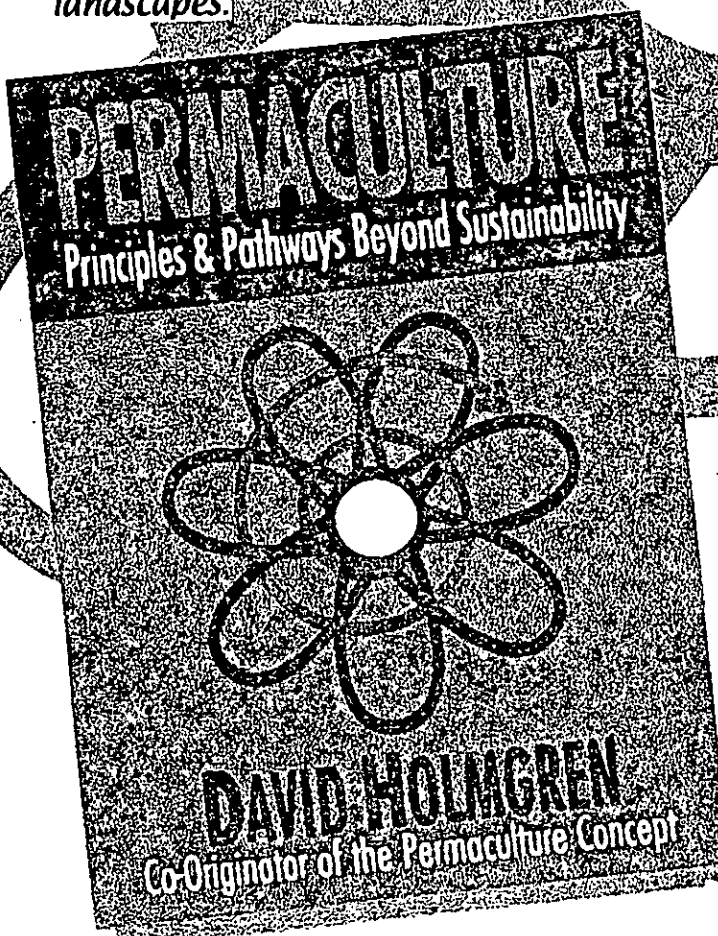
Cecil St, NIMBIN

FRIDAY 16th May

Launch 6.30

Talk 7-8 pm

Gold Coin Donation
Book Sales & Signing
Info Ph 6689 1755



HOLMGREN DESIGN SERVICES
www.holmgren.com.au